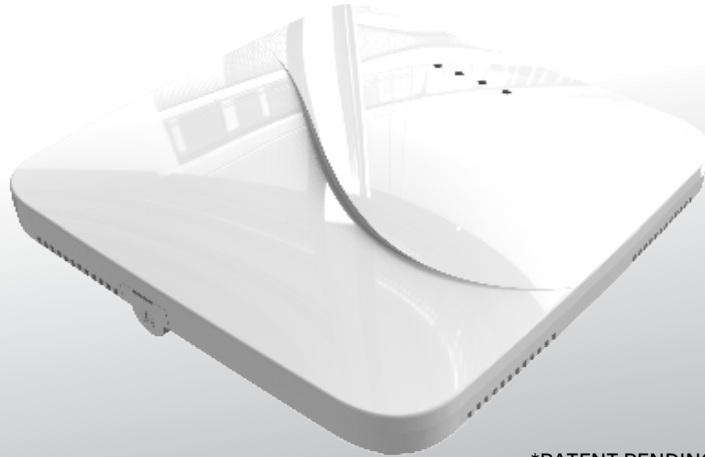


Wireless LAN Access Point

[M9-AP3]

TCP / IP EnOcean Gateway



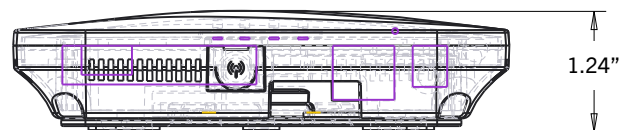
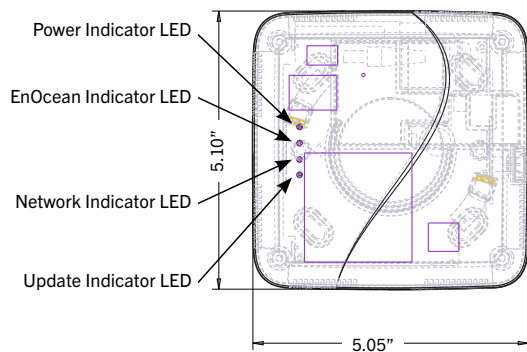
*PATENT PENDING

Wireless LAN Access Point with ETHERNET interface for use with EnOcean 868 MHz or 902 MHz wireless devices and the MES Venergy UI software.

TECHNICAL DATA

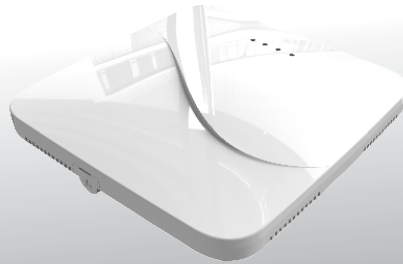
| | |
|------------------------------------|--|
| Part Numbers (Frequency Dependent) | M9-AP3 (902 MHz - North America) M8-AP3 (868 MHz - Europe and China) |
| Processor | AM3358 1GHz ARM® Cortex-A8 Processor |
| Onboard Flash | 4GB |
| Accelerator | NEON Floating-Point |
| Microcontroller | 2x RU 32-bit |
| RAM | 1 GB |
| Cache | 256KB |
| Dimensions | Length: 5.10" (129.54 mm) Width: 5.05" (128.27 mm) Height: 1.24" (31.496 mm) |

DIMENSIONS



SUBJECT TO CHANGE

Wireless LAN Access Point
[M9-AP3]
TCP / IP EnOcean Gateway



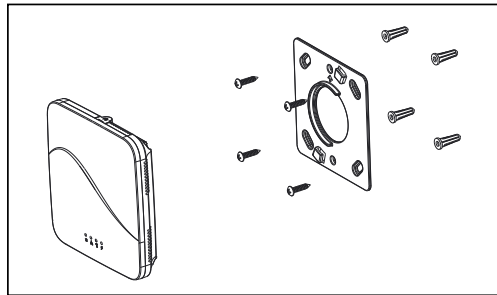
Mounting Instructions

- Screw backplate to wall or ceiling

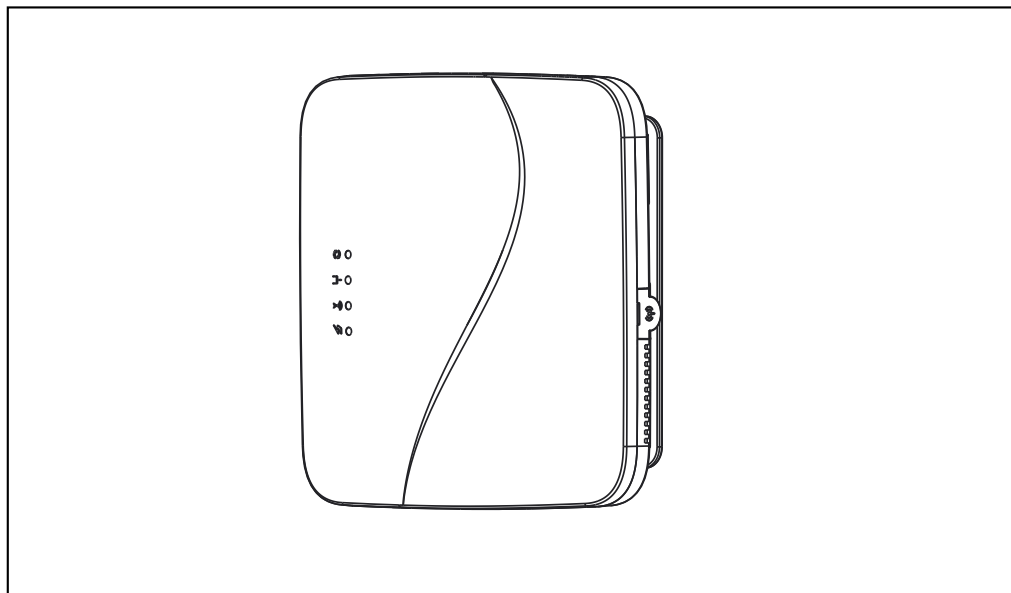
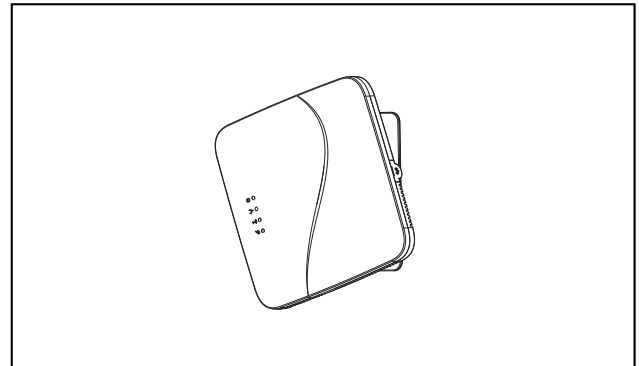
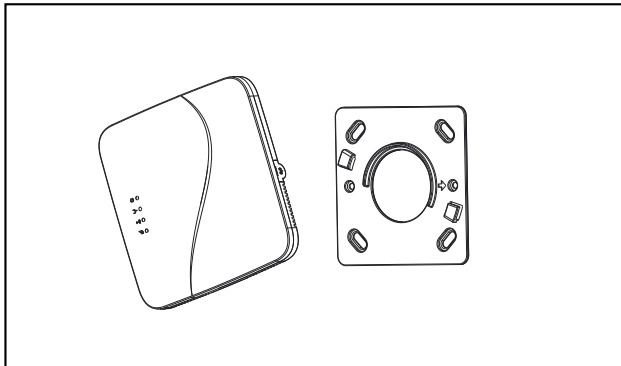
NOTE: Optimal mounting is at or below ceiling height and in conditioned environment.

NOTE: Range can vary greatly based on building materials, device positioning, interference, etc.

Reference the [EnOcean Range Planning Guide](#) prior to installation.



- Attach device to backplate by aligning tabs and twisting / locking into place (see below)



SUBJECT TO CHANGE