

Proudly Made In America

# M9-OPUS-HBK010V

## FIXTURE INTEGRATED 0-10V LIGHTING CONTROL FOR DIM-TO-OFF DRIVERS




### OVERVIEW:

Magnum’s fixture integrated Mx-OPUS-HBK010V node enables any lighting manufacturer with a high bay lighting offering to deliver simple, fully connected fixtures. The form factor includes a digital PIR and ambient light sensing for daylight harvesting applications as well as very accurate occupancy detection. Easy to integrate into a high bay fixture through an available half inch knock out, OPUS node bi-directionally communicates data to and from the lighting control network.

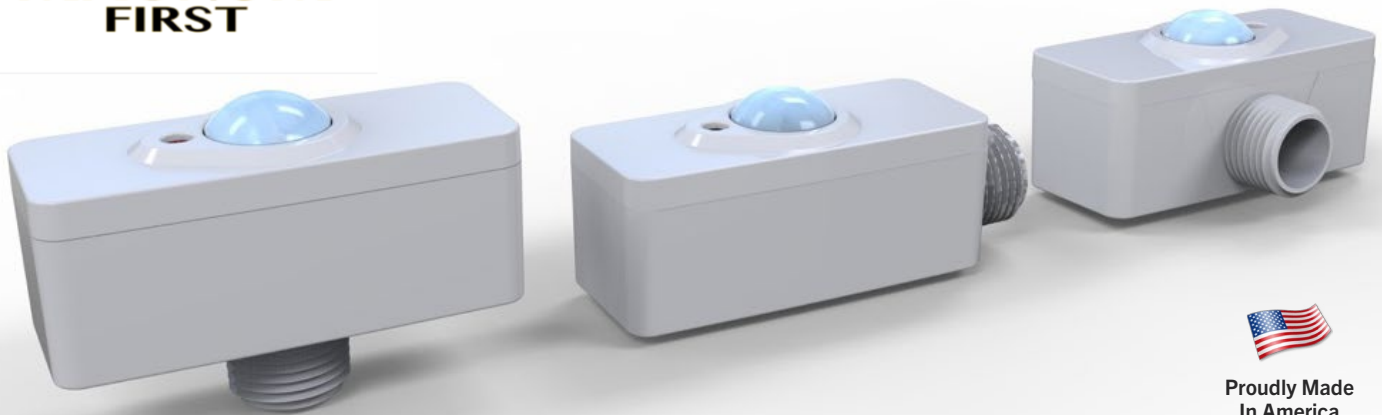
### DESCRIPTION:

The Mx-OPUS-HBK010V is designed to fit into most high bay LED lighting fixtures. The digital PIR sensor is rated for ceilings up to 39 feet. Although configurable for advanced settings, the Mx-OPUS-HBK010V is designed for plug and play applications. It is flexible enough for both localized control as well as software driven enhancement and also integration for BACnet through Magnum’s eBox (Mx-EBOX). The critical data points provided from this node includes occupancy status, light levels and light status.

### THREAD PLACEMENT PART NUMBERS:

<p><b>Mx-OPUS-HBK010V-SS</b> ("x" = Frequency Dependant)</p>	<p><b>M9</b> - (902 MHz - North America) <b>M8</b> - (868 MHz - Europe &amp; China) <b>MJ</b>- (928MHz - Japan)</p>	
<p><b>Mx-OPUS-HBK010V-LS</b> ("x" = Frequency Dependant)</p>	<p><b>M9</b> - (902 MHz - North America) <b>M8</b> - (868 MHz - Europe &amp; China) <b>MJ</b>- (928MHz - Japan)</p>	
<p><b>Mx-OPUS-HBK010V-BS</b> ("x" = Frequency Dependant)</p>	<p><b>M9</b> - (902 MHz - North America) <b>M8</b> - (868 MHz - Europe &amp; China) <b>MJ</b>- (928MHz - Japan)</p>	

\*Subject to change



Proudly Made  
In America

# M9-OPUS-HBK010V

FIXTURE INTEGRATED 0-10V LIGHTING CONTROL FOR DIM-TO-OFF DRIVERS

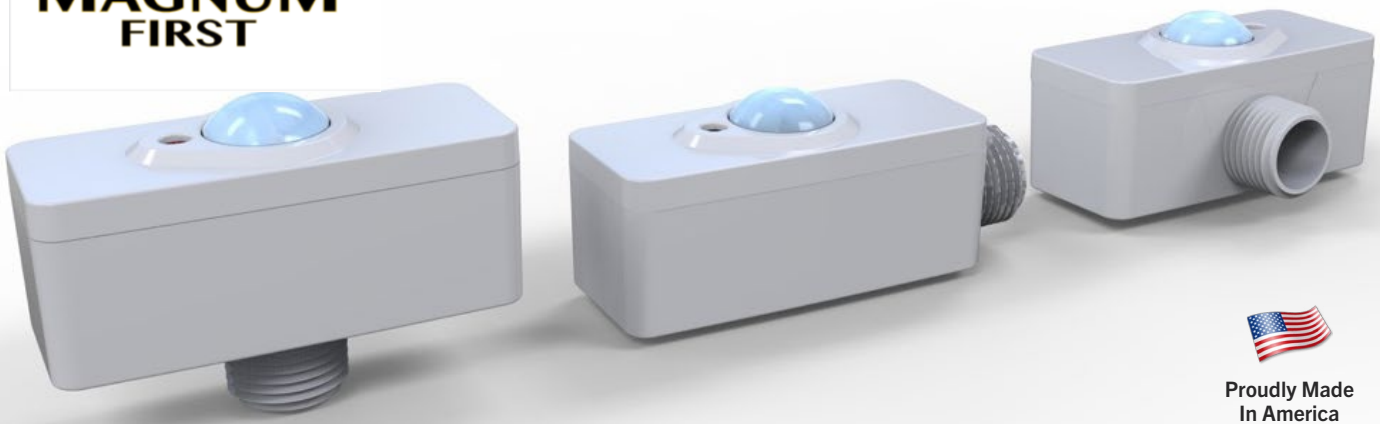
## FEATURES:

- Full digital passive infrared for occupancy sensing
- Powered from driver or any available 12-24VAC / 12-36VDC source
- Wireless communication
- Daylight harvesting
- Compatible with 0-10V, dim-to-off LED drivers
- Remotely configurable

## TECHNICAL DATA:

Motion Sensing	Digital Passive IR
Detection Distance	12 m (39.3696 ft)
Detection Range (Horizontal x Vertical)	102° x 92°
Detection Zone	92 Zones
Ambient Light Sensing	0-94.8 FC (0-1020 LUX) Photo IC type
Operating Temperature	32° - 140°F (0° - 60°C)
Input Voltage	12-24VAC /12-36VDC
Output	0-10VDC @ 30mA (sinking driver) 5mA (sourcing driver)
Standby Power	< 1W
Wireless Protocol	EnOcean Wireless Protocol
Wireless Range	150 ft (50 ft-150 ft typical) / 45.72 m (15.24 m - 45.72 m)
Certifications	CE DLC

\*Subject to change

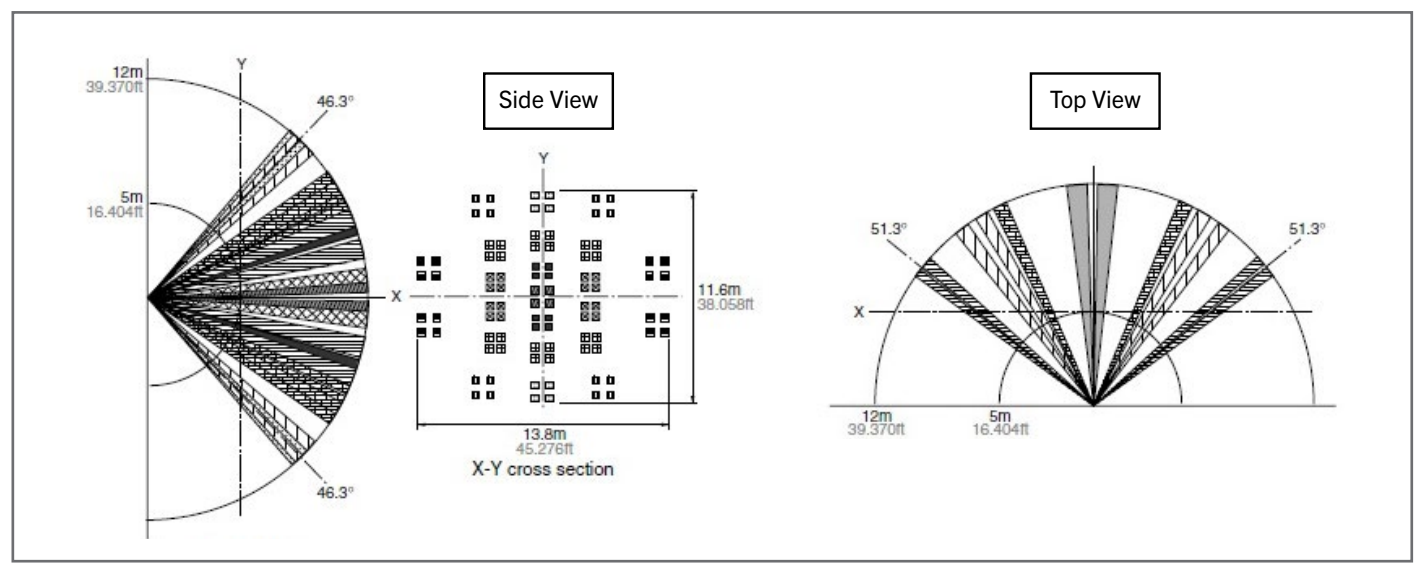


Proudly Made In America

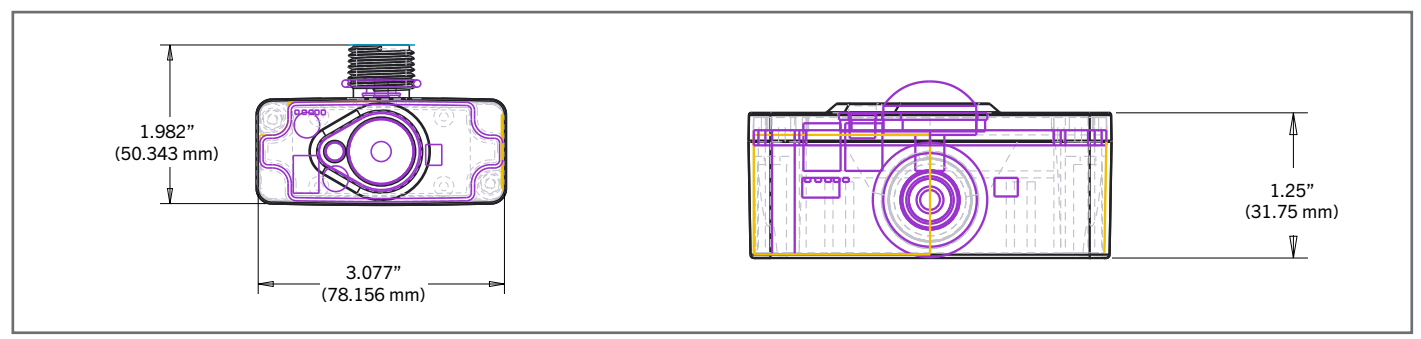
# M9-OPUS-HBK010V

FIXTURE INTEGRATED 0-10V LIGHTING CONTROL FOR DIM-TO-OFF DRIVERS

## DETECTION PERFORMANCE:



## DIMENSIONS:



\*Subject to change

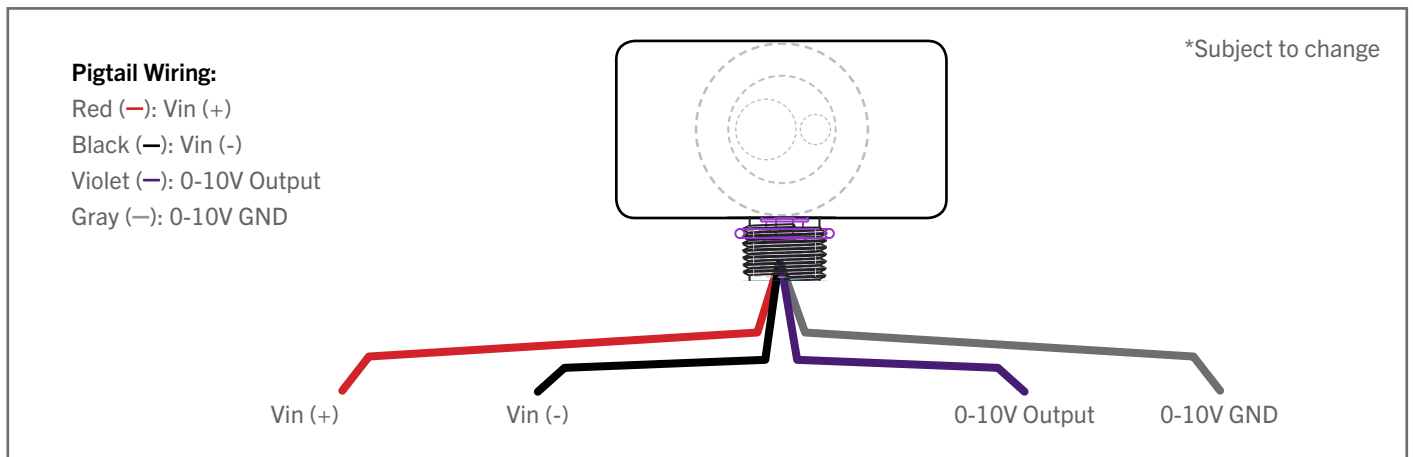


Proudly Made  
In America

# M9-OPUS-HBK010V

FIXTURE INTEGRATED 0-10V LIGHTING CONTROL FOR DIM-TO-OFF DRIVERS

## WIRING DIAGRAM:



**NOTE: Magnum Wireless device antenna cannot be enclosed inside a metal box. Wireless range will be greatly limited with enclosed antenna.**

\*Subject to change